

Des Moines Independent Community School District

PROJECT: Brubaker & Hoyt HVAC Improvement

PROJECT NUMBER: 20-061 / 20-063

DATE: February 2, 2021

NOTE { THIS ADDENDUM HAS BEEN ISSUED TO MODIFY AND/OR INTERPRET THE BIDDING DOCUMENTS, INCLUDING THE DRAWINGS AND SPECIFICATIONS. UNLESS OTHERWISE INSTRUCTED. THE INFORMATION CONTAINED ON THE ADDENDUM SHALL TAKE PRECEDENCE OVER ANYTHING CONTRARY ON THE ORIGINAL BIDDING DOCUMENTS AND SHALL BE HEREINAFTER CONSIDERED AS A PARTY OF THE BIDDING DOCUMENTS.

CLARIFICATION [BRUBAKER]

1. Update existing N2 controllers to new FEC controllers for remaining 24 vertical heat pumps.

PLANS [BRUBAKER]

SHEET MD1.1 – MAIN LEVEL PLAN – MECHANICAL PIPING DEMOLITION EAST

1. Mech A108
 - A. **REMOVE** HP-15-3 as this heat pump does not exist.
 - B. **REMOVE** reference note #D2.
 - C. **ADD** existing water cooled VRF unit to remain.

SHEET MD2.1 – MAIN LEVEL PLAN – HVAC DEMOLITION EAST

1. Mech A108
 - A. **REMOVE** HP-15-3 and associated ductwork as this heat pump does not exist.
 - B. **REMOVE** reference note #D3.
 - C. **ADD** existing water cooled VRF unit to remain.

SHEET M1.1 – MAIN LEVEL PLAN – MECHANICAL PIPING EAST

1. Mech A108
 - A. **REMOVE** HP-15-3 as this heat pump does not exist.
 - B. **REMOVE** reference note #1.
 - C. **ADD** existing water cooled VRF unit to remain.

SHEET M2.1 – MAIN LEVEL PLAN – HVAC EAST

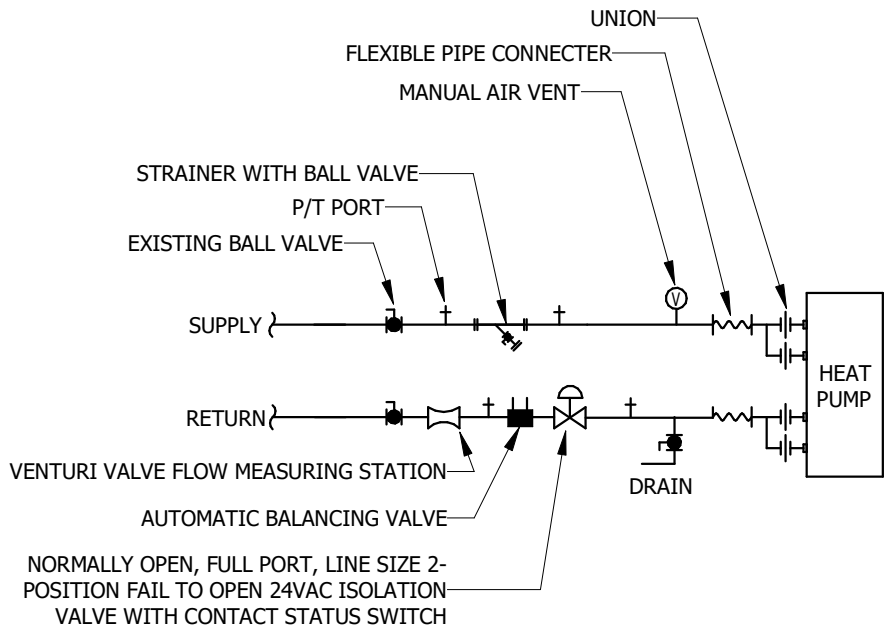
1. Mech A108
 - A. **REMOVE** HP-15-3 as this heat pump does not exist.
 - B. **REMOVE** reference note #2.
 - C. **ADD** existing water cooled VRF unit to remain.
2. Toilet A109a
 - A. **REMOVE** S2 supply diffuser and associated supply ductwork from heat pump main.

SHEET M5.1 – MECHANICAL SCHEDULES

1. Heat Pump Hose Kit Detail
 - A. **ADD** control valve per attached detail on supplemental drawing M5.1-1.
 - B. **ADD** note #3 to read, "Control valve furnished by JCI, installed by Mechanical Contractor, wired by JCI.

ATTACHMENTS

M5.1-1.PDF



NOTES:

1. REFER TO HEAT PUMP FOR HOSE KIT SIZES.
2. FOR ALTERNATE BID #1: REPLACE HOSE KIT ACCESSORIES DOWNSTREAM OF EXISTING ISOLATION BALL VALVES. PROVIDE NEW ISOLATION VALVE IF EXISTING DOES NOT EXIST.
3. CONTROL VALVE FURNISHED BY JCI, INSTALLED BY MECHANICAL CONTRACTOR, WIRED BY JCI.
4. REFER TO DRAWINGS FOR BASE BID AND ALTERNATE HEAT PUMP REQUIREMENTS.

1 HEAT PUMP HOSE KIT DETAIL
No Scale

BRUBAKER ELEMENTARY HVAC UPGRADES

SHEET: M5.1-1 | DATE: 02/02/2021 | SCALE: NO SCALE

TITLE: MECHANICAL DETAILS

M O D U S
M O D I S

WATERLOO | DES MOINES | IOWA CITY
 214 EAST 4TH ST. | 130 EAST 3RD ST. | 118 EAST COLLEGE ST.
 WATERLOO, IOWA | DES MOINES, IOWA | IOWA CITY, IOWA
 (319)235-0650 | (515)251-7280 | (319)248-4600