

To: All Plan Holders and Prospective Bidders

Re: Des Moines Independent Community School District
McKinley Elementary School – Secure Entry
1610 SE 6th Street, Des Moines, IA 50315
Bid No: Q8569

ADDENDUM #1

December 16th, 2020

This addendum incorporates the following changes to the bid documents that were issued on November 25th, 2020. To be considered, bidders shall indicate on the Bid Form that this communication was received and that all changes were included in their bid total. It is the responsibility of the contractor to contact the owner's representative prior to bid date to verify the issuing of any and all clarifying addenda.

These items shall supersede all statements to the contrary in the drawings and project manual (specifications) and shall take precedence over those documents. These items are not listed in any particular order and are intended to add, delete, change and/or clarify the original scope of work.

Architectural Addendum	2 pages
Architectural Drawings: ASD1,ASD2	<u>2 page</u>
	4 pages total

Please feel free to contact our office via phone at 515-556-6584 or email at jordan@studiomelee.com if you have any questions or comments concerning this addendum or if you require additional information/clarification.

Respectfully submitted,



Jordan Collins, AIA, LEEDap

Architectural Addendum:

Item #A1: **ADDITION – INTERIOR ELEVATION: NEW MURAL LOCATION**

ADD drawing 3 to sheet A1.1.

Supplemental Drawing ASD1 is included at the end of this addendum and are intended to revise information shown on the corresponding sheets.

Item #A2: **ADDITION – ELEVATION TAG**

REPLACE area from sheet A1.1 with information on ASD2.

Supplemental Drawing ASD2 is included at the end of this addendum and are intended to revise information shown on the corresponding sheets.

Item #A3: **ADDITION – KEYNOTE 2**

ADD “VERIFY/CONFIRM LOCATION WITH ARCHITECT PRIOR TO INSTALLATION.” to the end of keynote #2 on sheet A1.1.

End of Architectural Addendum

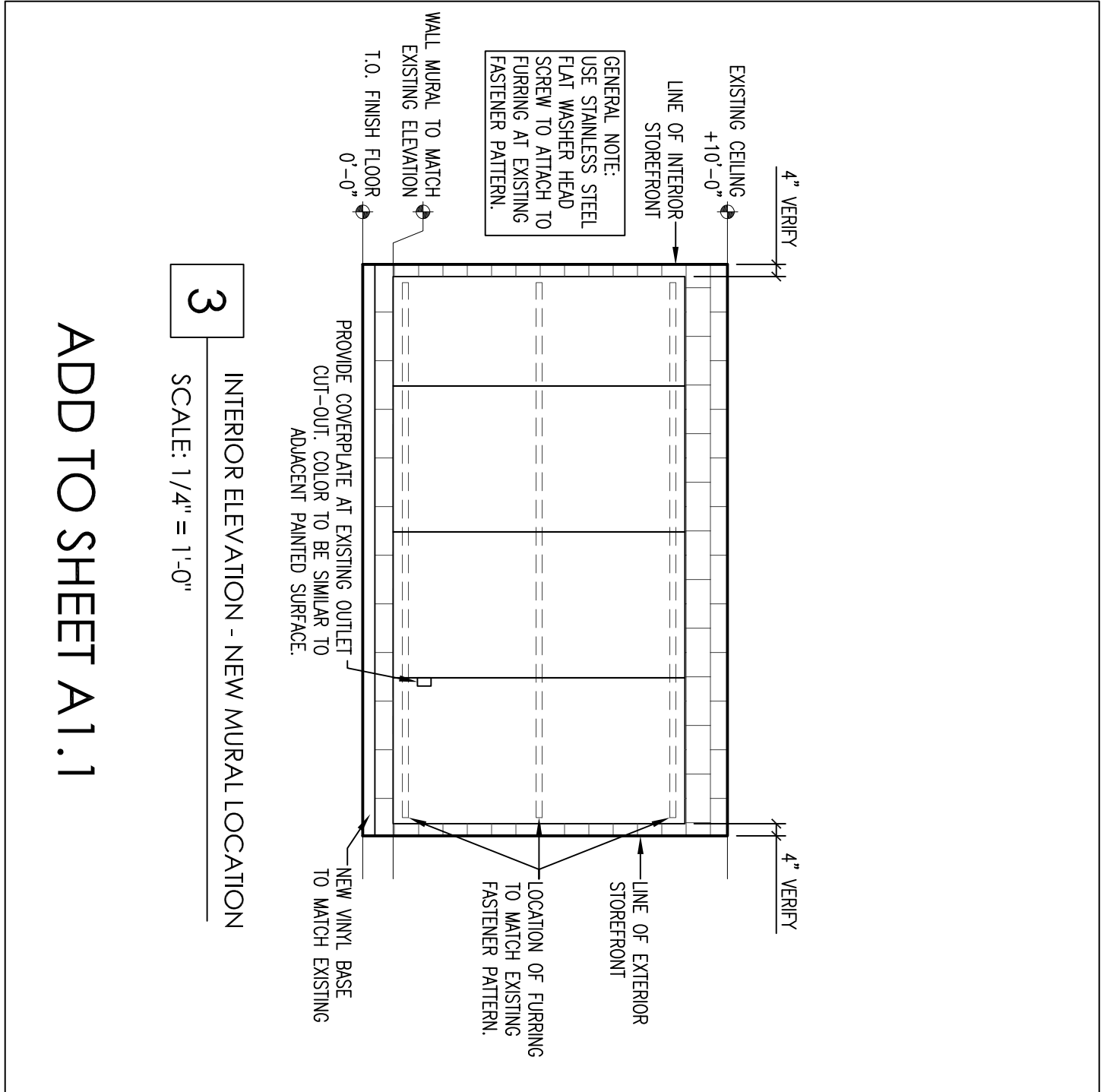


STUDIO MELLE
 1312 LOCUST STREET, SUITE 1002
 DES MOINES, IOWA 50309

MCKINELY ELEMENTARY

1610 SE 6TH ST SECURE
 DES MOINES, IOWA 50315 ENTREE

PRINT DATE:
 DECEMBER 16, 2020



ASD1



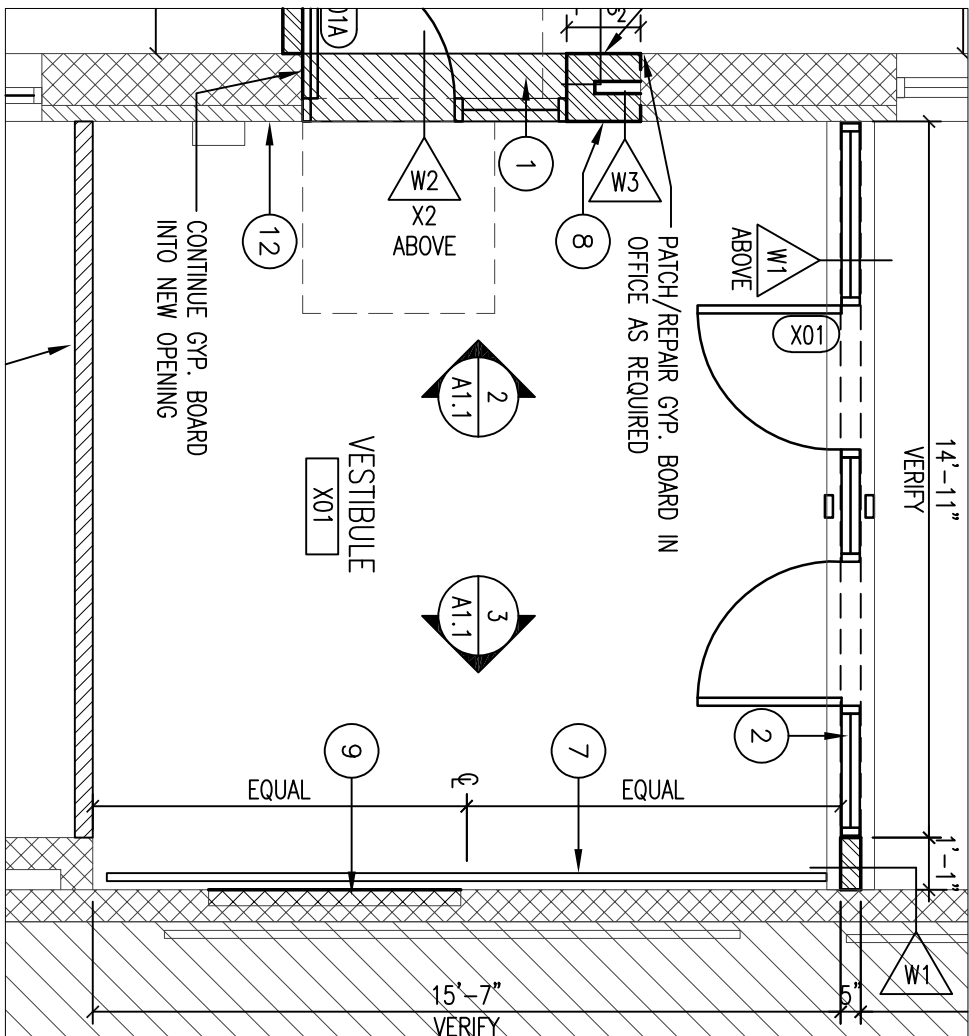
STUDIO MELLE
 1312 LOCUST STREET, SUITE 1002
 DES MOINES, IOWA 50309

MCKINELY ELEMENTARY

1 6 1 0 S E 6 T H S T S E C U R E
 D E S M O I N E S , I O W A 5 0 3 1 5 E N T R Y

PRINT DATE:
 DECEMBER 16, 2020

ADD TO SHEET A1.1



ASD2