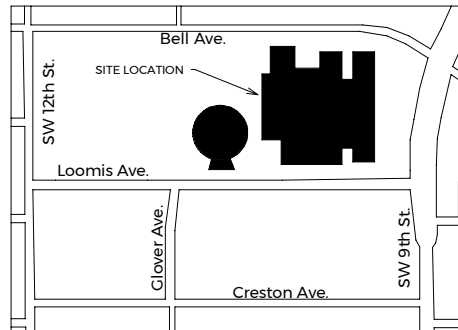




LINCOLN H.S. - SHEET INDEX



- A4.700 TITLE SHEET
- A4.710 FLOOR PLAN - GROUND FLOOR
- A4.711 FLOOR PLAN - 2ND FLOOR
- A4.712 FLOOR PLAN - 3RD FLOOR
- A4.713 ENLARGED PLANS 003-004
- A4.714 ENLARGED PLANS 009A-015-016
- A4.715 ENLARGED PLANS 029-043
- A4.716 ENLARGED PLAN 044-114A
- A4.717 ENLARGED PLAN 120-121
- A4.718 ENLARGED PLANS 136-137
- A4.719 ENLARGED PLAN 146A-155
- A4.720 ENLARGED PLAN 156-168-3031
- A4.721 ENLARGED PLAN 3082-3083
- A4.722 ENLARGED PLAN 3302-3303
- A4.723 ENLARGED PLAN 3341-3345-3391
- A4.724 ENLARGED PLAN 3430-3450

2 LINCOLN H.S. VICINITY PLAN

1/2" = 1'-0" N↑

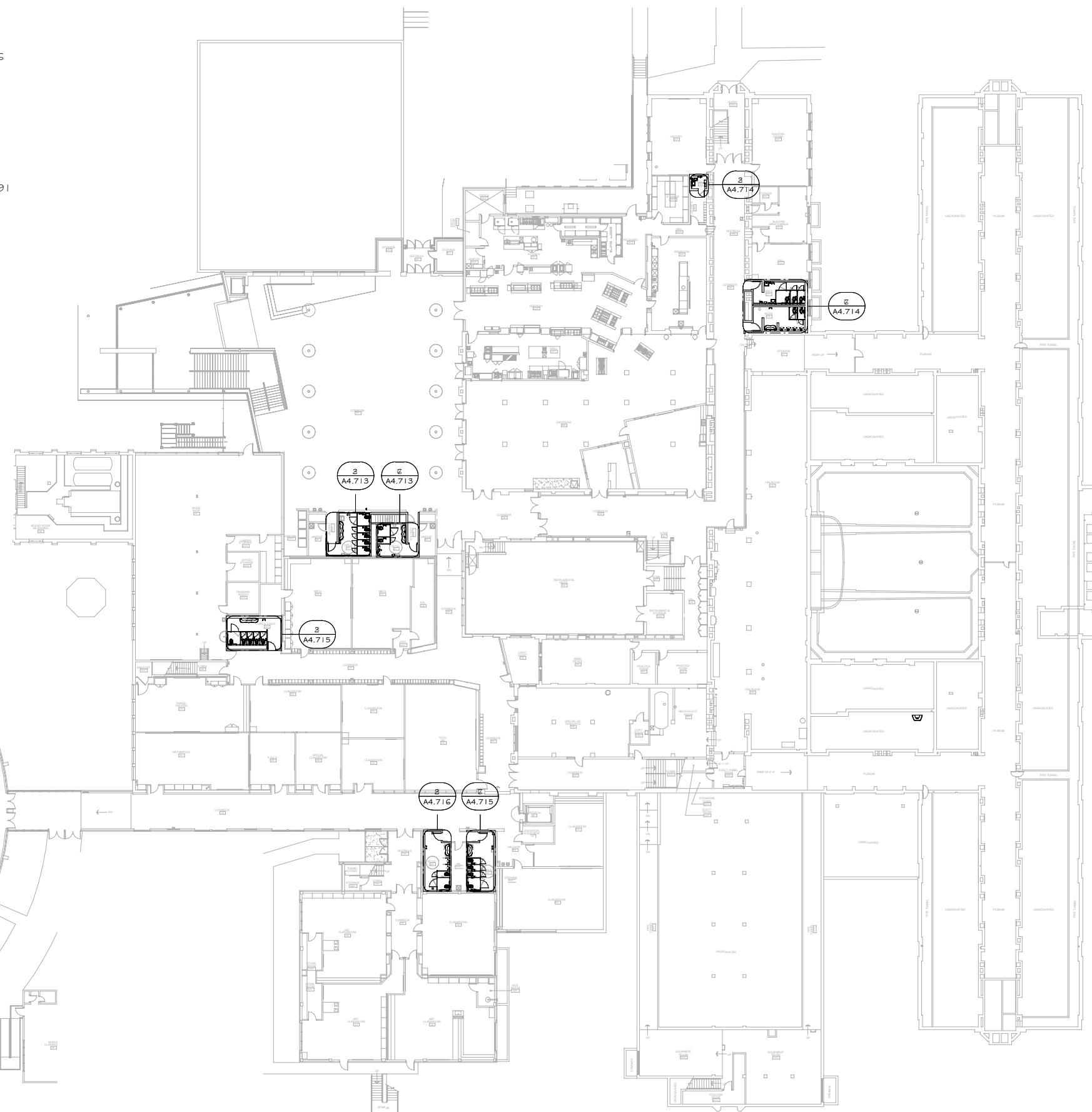
ROOM FINISH SCHEDULE										
NO	NAME	FLOOR	BASE	WALL - NORTH	WALL - EAST	WALL - SOUTH	WALL - WEST	CEILING - FINISH	CEILING - HEIGHT	REMARKS
122	NURSE 122									
132	CONTROL	EX	VB	EX	PT	EX	EX	EX	9'-0"	
133	BOYS 133	EFT	SS	EX	EX	EX	EX	PT		
134	GRS 134	EFT	SS	EX	EX	EX	EX	PT		
137	CONTROL	EX	VB	EX	EX	EX	EX	EX		
138	GRS 138	EFT	SS	EX	EX	EX	EX	PT		
139	BOYS 139	EFT	SS	EX	EX	EX	EX	PT		
147A	WOMEN							ACT		
149	GRS 149	EFT	SS	CT 6"	CT 6"	CT 6"	CT 6"	ACT		
151	BOYS 151	EFT	SS	CT 6"	CT 6"	CT 6"	CT 6"	ACT		
165	CORRIDOR	EX	EX	EX	EX	EX	EX	EX		
166	BOYS 166	EFT	SS	EX	EX	EX	EX	PT		
167	CLUB	EX	EX	EX	EX	EX	EX	EX		
168	GRS 168	EFT	SS	EX	EX	EX	EX	PT		
200	GRS 200	EX	SS	SS	EX	EX	EX	ACT 1X1"		
200C	BOYS 200C	EX	SS	SS	EX	EX	EX	ACT 1X1"		
303	GRS 303	EFT	SS	EX	EX	EX	EX	PT		
304	BOYS 304	EFT	SS	EX	EX	EX	EX	PT		

REMARKS:

1. WALL FINISH PARTIAL HEIGHT	ACT 2.2 ACOUSTICAL CEILING TILE	EX 2.2 EXISTING TO REMAIN
	CT 2.2 CERAMIC TILE	PT 2.2 PAINT
	CTB 2.2 CERAMIC TILE BASE	SS 2.2 SOLID SURFACE
	CHC 2.2 COMPOSITE WALL COVERING	TRZ 2.2 TERRAZZO BASE/FLOOR
	EFT 2.2 EPOXY FLOOR	VB 2.2 CERAMIC TILE BASE

1 GROUND FLOOR

3/16" = 1'-0" N↑



1615 Golden Aspen Drive
Suite 110
Ames, Iowa 50010

515 292 6075 Phone
515 292 6370 Fax

mail@rmharchitects.com

Project Number
Project Number

Print Record
Project Status 10/7/20

Revision Record

Consultant

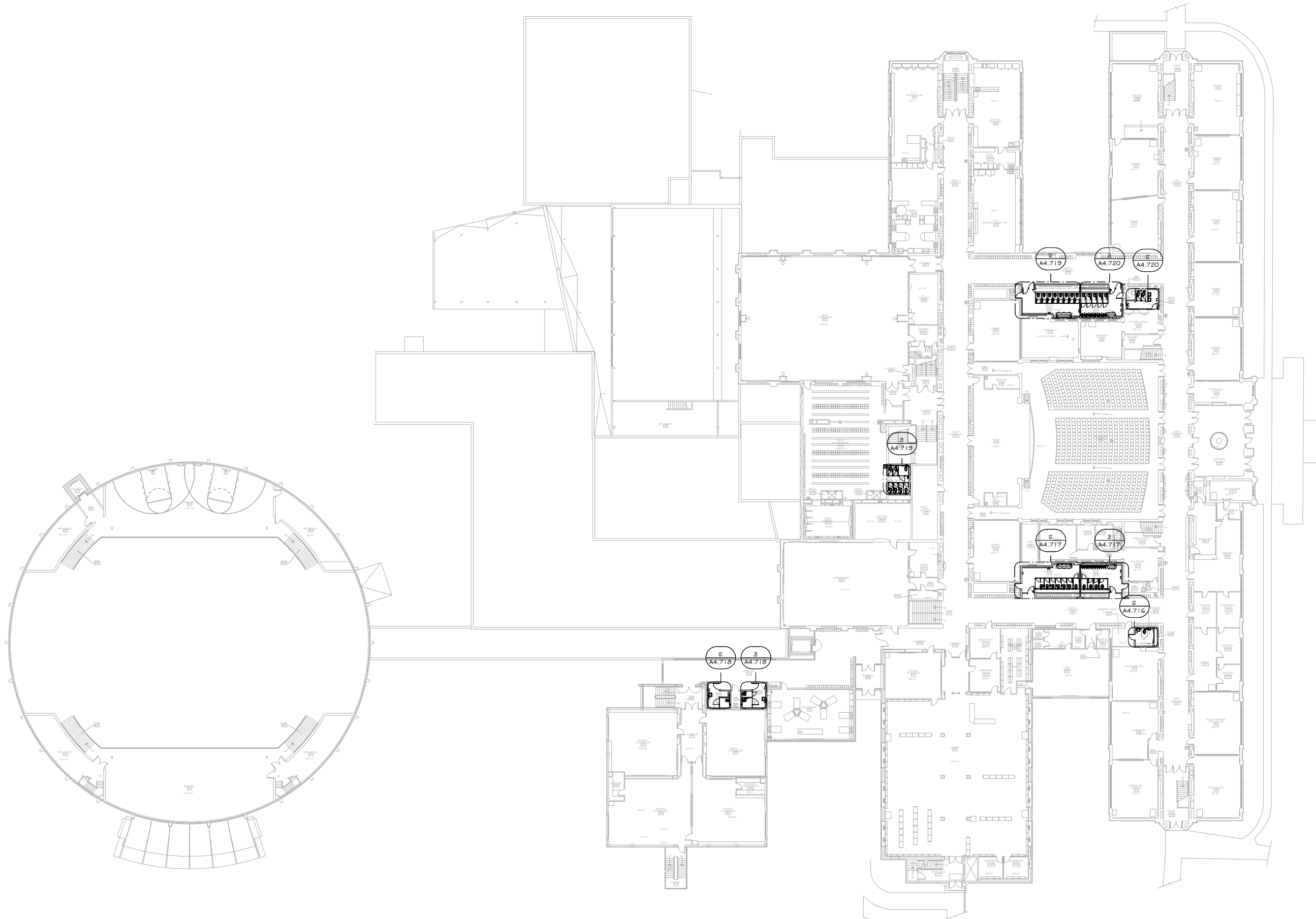


PRELIMINARY ONLY
NOT FOR CONSTRUCTION

DMPS RESTROOM REMODEL
Lincoln High School
2600 SW 9th St
Des Moines, IA 50315
FLOOR PLAN - GROUND FLOOR

© 10/7/20

A4.710



1 2ND FLOOR
3/64" = 1'-0" N↑



1615 Golden Aspen Drive
Suite 110
Ames, Iowa 50010

515 292 6075 Phone
515 292 6370 Fax

mail@rmharchitects.com

Project Number
Project Number

Print Record
Project Status 10/07/20

Revision Record

Consultant



PRELIMINARY ONLY
NOT FOR CONSTRUCTION

DMPs RESTROOM REMODEL
Lincoln High School
2600 SW 9th St
Des Moines, IA 50315
FLOOR PLAN - 2ND FLOOR

© 10/07/20

A4.711



1615 Golden Aspen Drive
Suite 110
Ames, Iowa 50010

515 292 6075 Phone
515 292 6370 Fax

mail@rmharchitects.com

Project Number
Project Number

Print Record
Project Status 10/07/20

Revision Record

Consultant

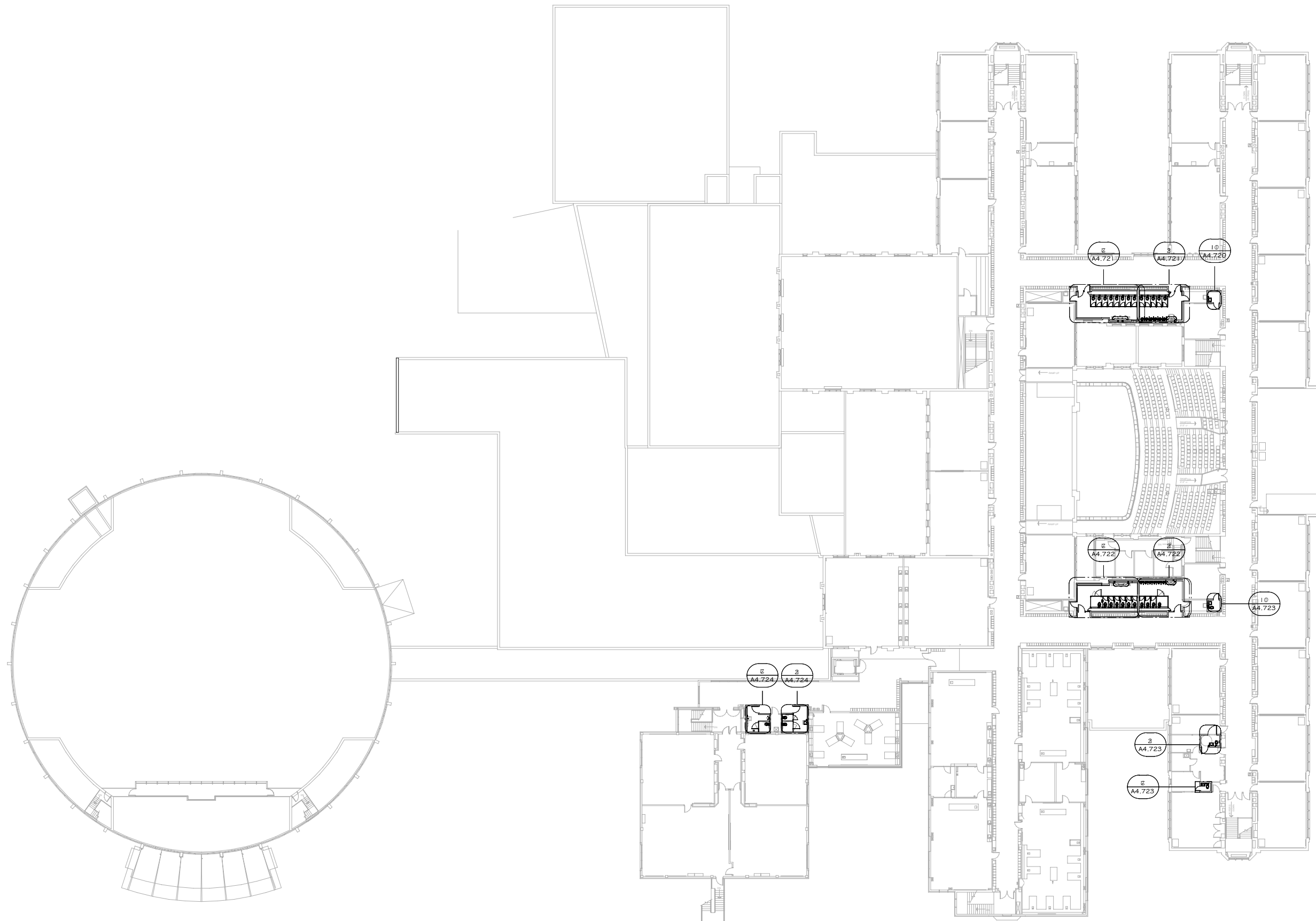


PRELIMINARY ONLY
NOT FOR CONSTRUCTION

DMPs RESTROOM REMODEL
Lincoln High School
2600 SW 9th St
Des Moines, IA 50315
FLOOR PLAN - 3RD FLOOR

© 10/07/20

A4.712



1 3RD FLOOR
3/64" = 1'-0" N↑