

1 FIRST FLOOR PLAN
 1/16" = 1'-0" N↑



1615 Golden Aspen Drive
 Suite 110
 Ames, Iowa 50010

515 292 6075 Phone
 515 292 6370 Fax

mail@rmharchitects.com

www.rmharchitects.com

Project Number
 20011

Print Record
 Review 7/20/20

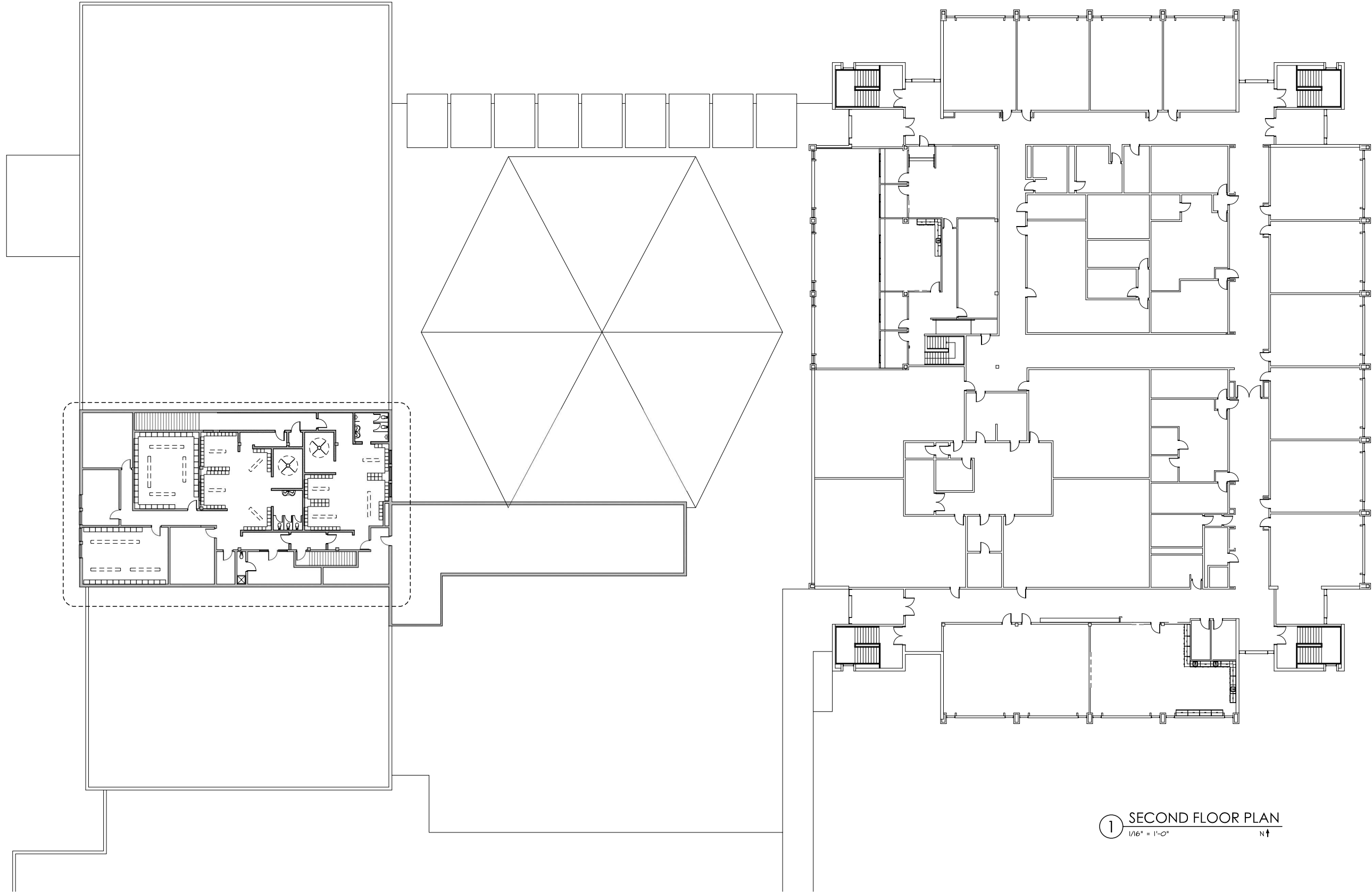
Revision Record

Consultant

PRELIMINARY ONLY
 NOT FOR CONSTRUCTION

HOOVER HIGH SCHOOL

FIRST FLOOR PLAN



1 SECOND FLOOR PLAN
 1/16" = 1'-0" N ↑



1615 Golden Aspen Drive
 Suite 110
 Ames, Iowa 50010

515 292 6075 Phone
 515 292 6370 Fax

mail@rmharchitects.com

www.rmharchitects.com

Project Number
 20011

Print Record
 Review 7/20/20

Revision Record

Consultant

PRELIMINARY ONLY
 NOT FOR CONSTRUCTION

HOOVER HIGH SCHOOL

SECOND FLOOR PLAN