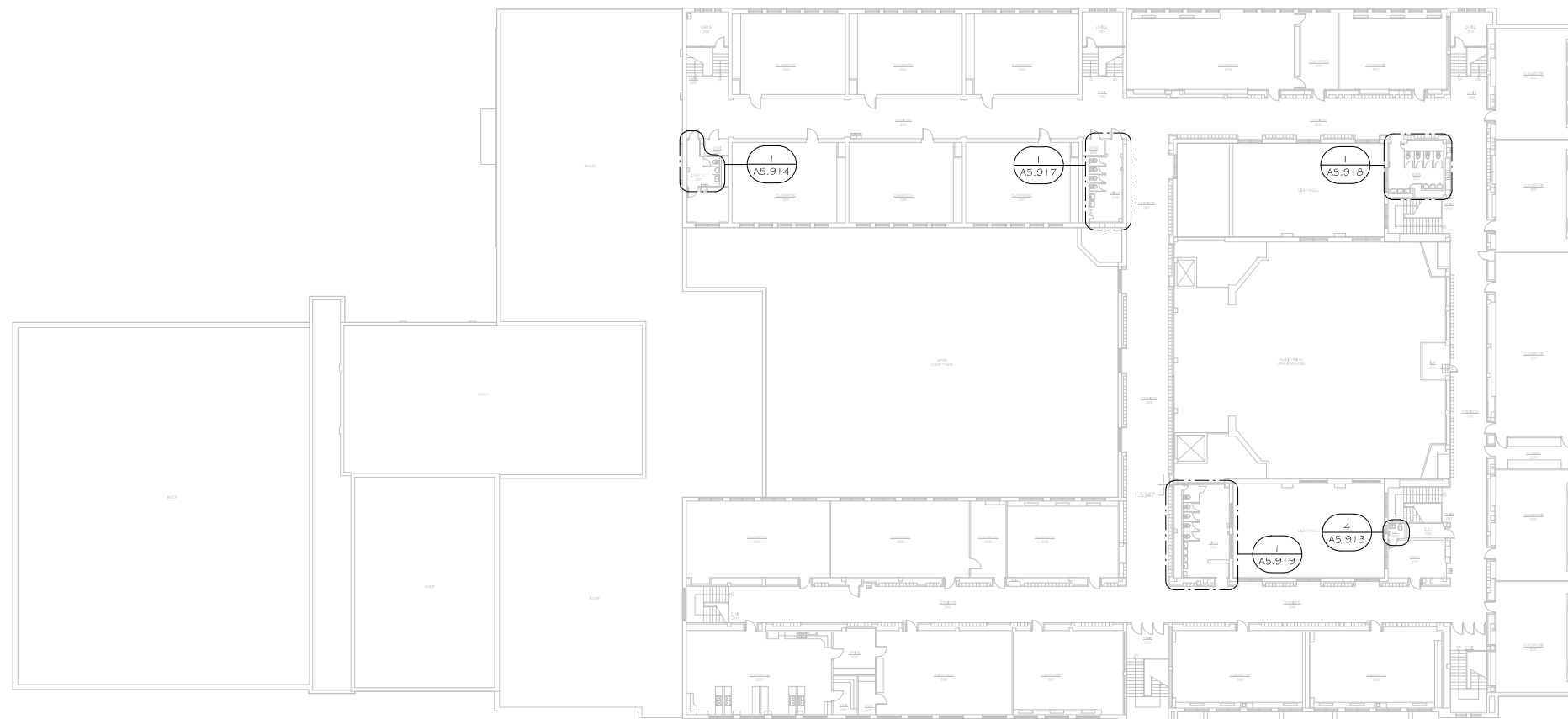


1 Harding Location Plan 1st Floor  
 3/64" = 1'-0" N↑



2 Harding Location Plan 2nd Floor  
 3/64" = 1'-0" N↑



1615 Golden Aspen Drive  
 Suite 110  
 Ames, Iowa 50010  
 515 292 6075 Phone  
 515 292 6370 Fax  
 mail@rmharchitects.com  
 www.rmharchitects.com

Project Number  
 Project Number

Print Record  
 Project Status 12/4/2020

Revision Record

Consultant



PRELIMINARY ONLY  
 NOT FOR CONSTRUCTION

DMPS RESTROOM REMODEL  
 HARDING MIDDLE SCHOOL  
 203 E EUCLID AVE  
 DES MOINES, IA 50313

HARDING LOCATION PLAN

© 12/4/2020

A5.910