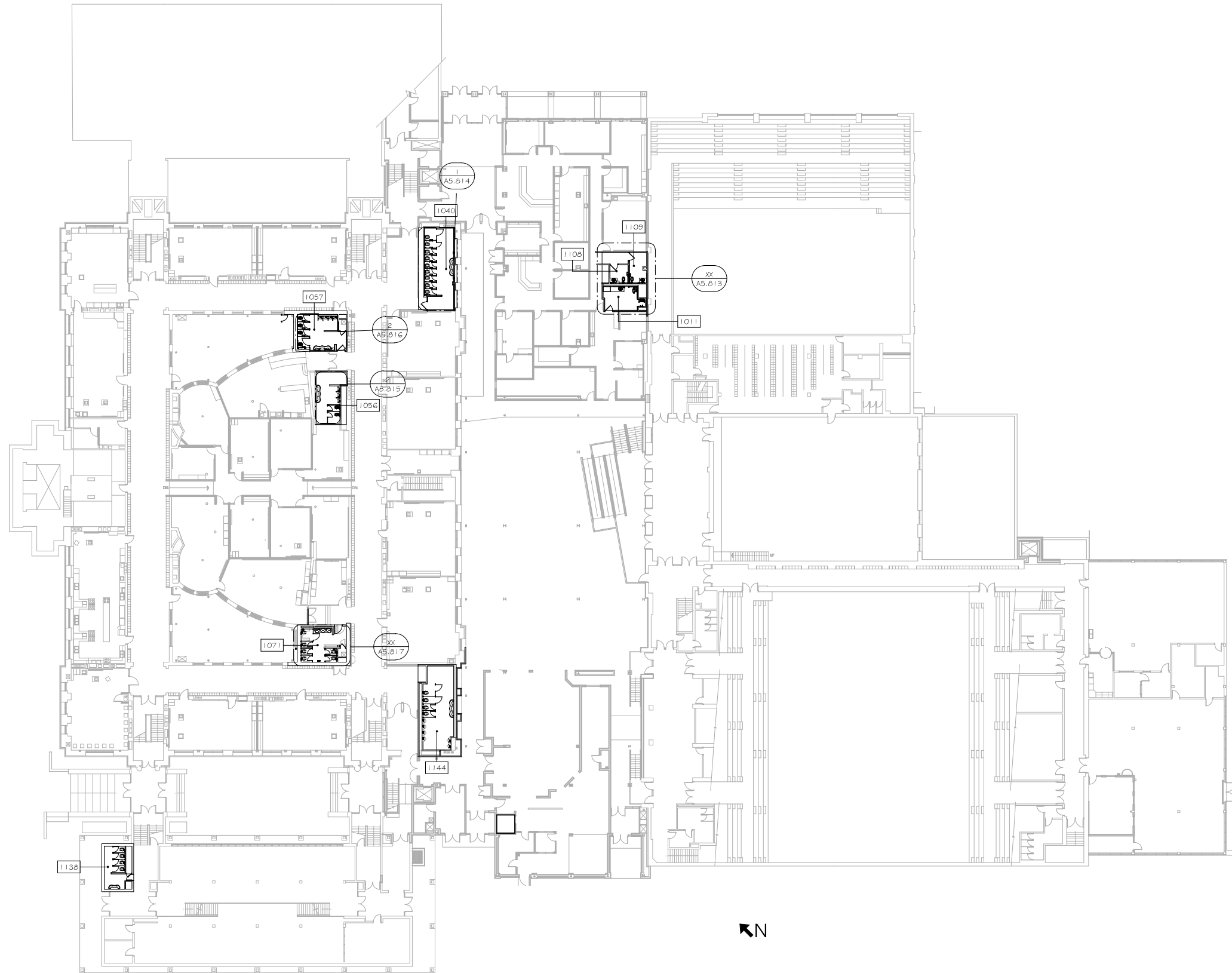




1 O LL FLR
3/16" = 1'-0"



1 1ST LEVEL
3/64" = 1'-0"



1615 Golden Aspen Drive
Suite 110
Ames, Iowa 50010

515 292 6075 Phone
515 292 6370 Fax

mail@rmharchitects.com
www.rmharchitects.com

Project Number
Project Number

Print Record
Project Status 12/14/20

Revision Record

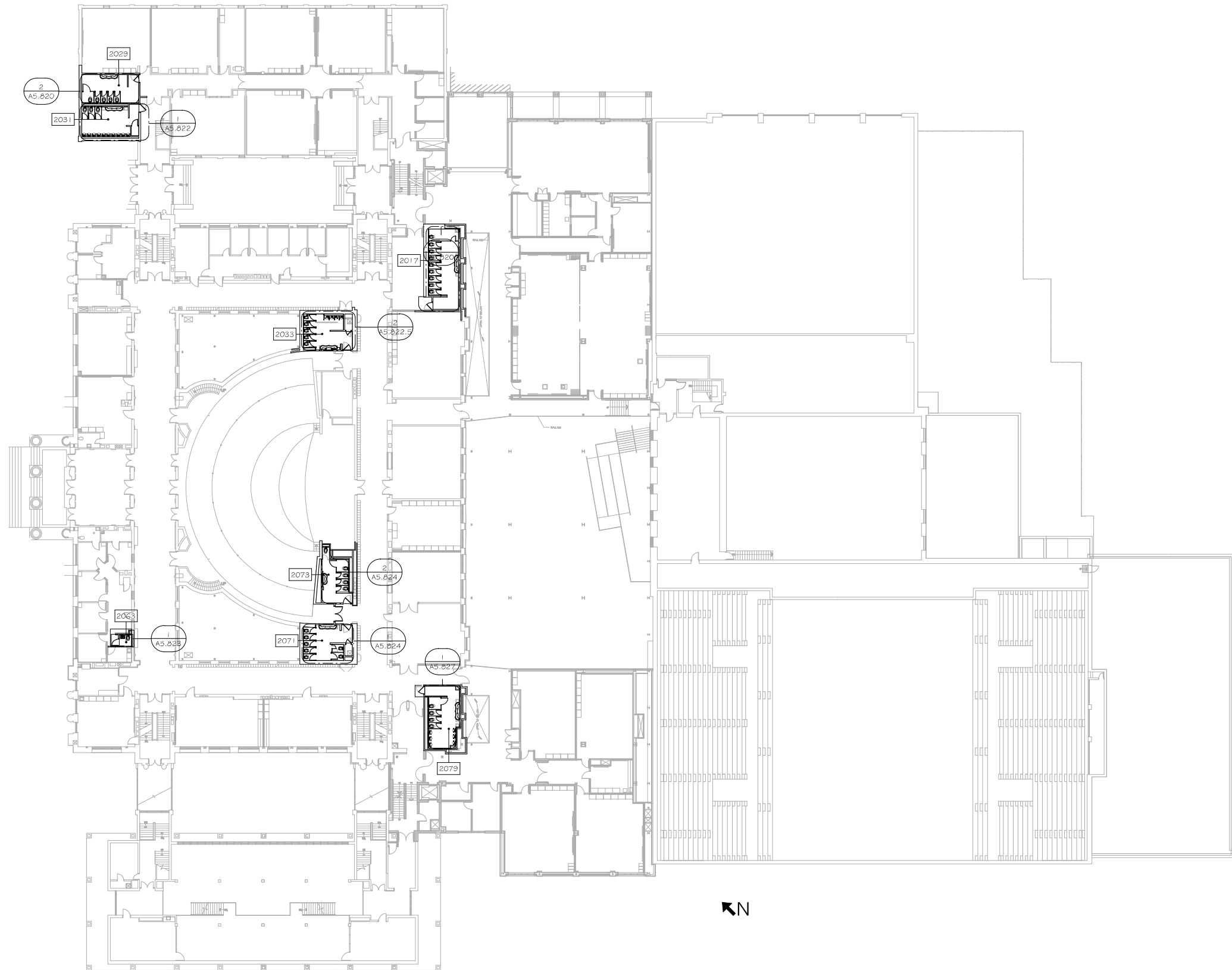
Consultant



PRELIMINARY ONLY
NOT FOR CONSTRUCTION

DMPs RESTROOM REMODEL
EAST HIGH SCHOOL
815 E. 13th St
Des Moines, IA 50311

FLOOR PLAN - 1ST LEVEL



1 2ND LEVEL
3/64" = 1'-0"



1615 Golden Aspen Drive
Suite 110
Ames, Iowa 50010

515 292 6075 Phone
515 292 6370 Fax

mail@rmharchitects.com

www.rmharchitects.com

Project Number
Project Number

Print Record
Project Status 12/14/20

Revision Record

Consultant



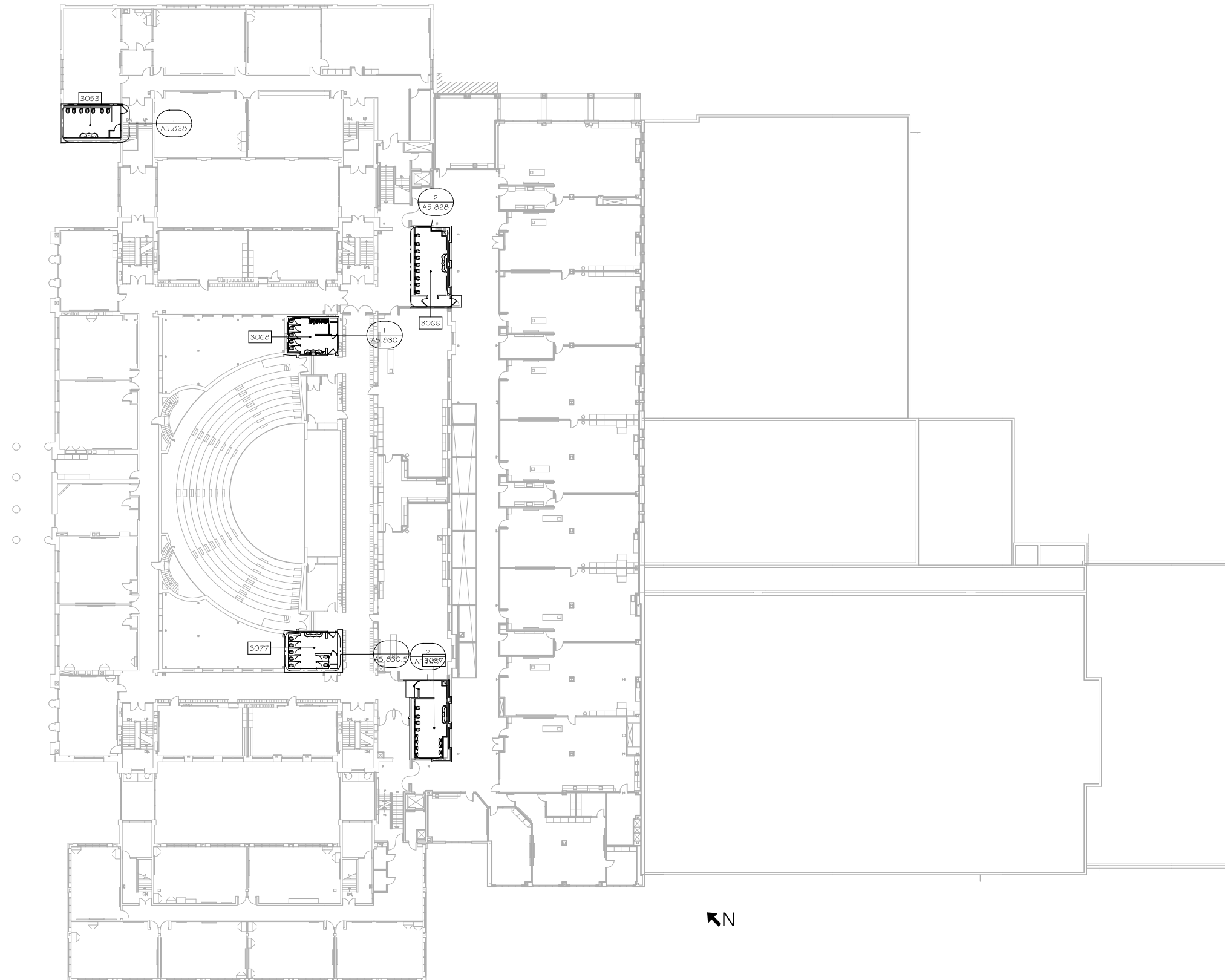
PRELIMINARY ONLY
NOT FOR CONSTRUCTION

DMP5 RESTROOM REMODEL
EAST HIGH SCHOOL
815 E. 13th St
Des Moines, IA 50311

FLOOR PLAN - 2ND LEVEL

© 12/14/20

A5.802



1 3RD LEVEL
3/64" = 1'-0"



1615 Golden Aspen Drive
Suite 110
Ames, Iowa 50010

515 292 6075 Phone
515 292 6370 Fax

mail@rmharchitects.com
www.rmharchitects.com

Project Number
Project Number

Print Record
Project Status 12/14/20

Revision Record

Consultant

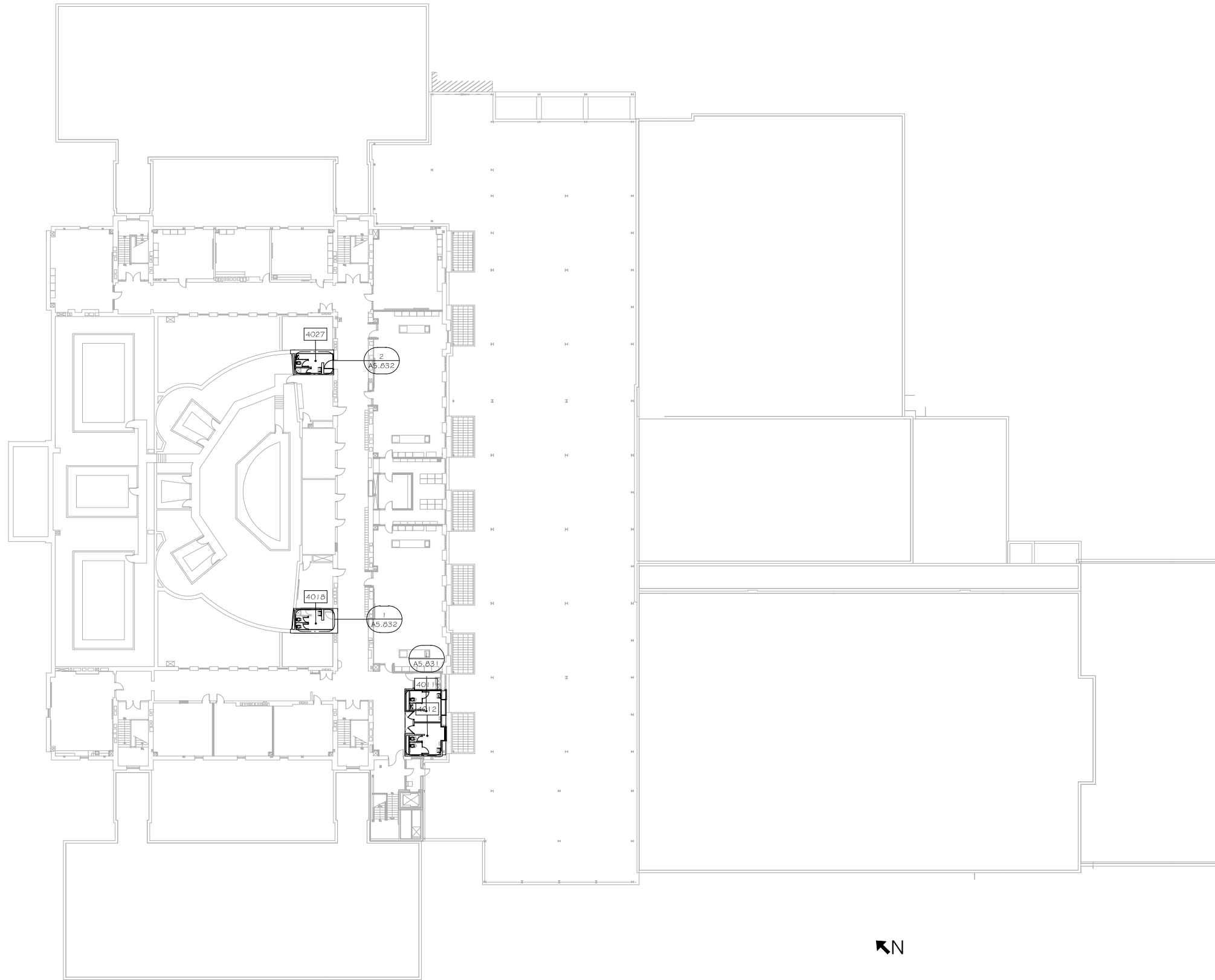


PRELIMINARY ONLY
NOT FOR CONSTRUCTION

DMPs RESTROOM REMODEL
EAST HIGH SCHOOL
815 E. 13th St
Des Moines, IA 50311

FLOOR PLAN - 3RD LEVEL

© 12/14/20
A5.803



1 4TH LEVEL
 3/64" = 1'-0"



1615 Golden Aspen Drive
 Suite 110
 Ames, Iowa 50010

 515 292 6075 Phone
 515 292 6370 Fax

 mail@rmharchitects.com
 www.rmharchitects.com

Project Number
 Project Number

 Print Record
 Project Status 12/14/20

 Revision Record

 Consultant



PRELIMINARY ONLY
 NOT FOR CONSTRUCTION

DMPs RESTROOM REMODEL
 EAST HIGH SCHOOL
 815 E. 13th St
 Des Moines, IA 50311

 FLOOR PLAN - 4TH LEVEL