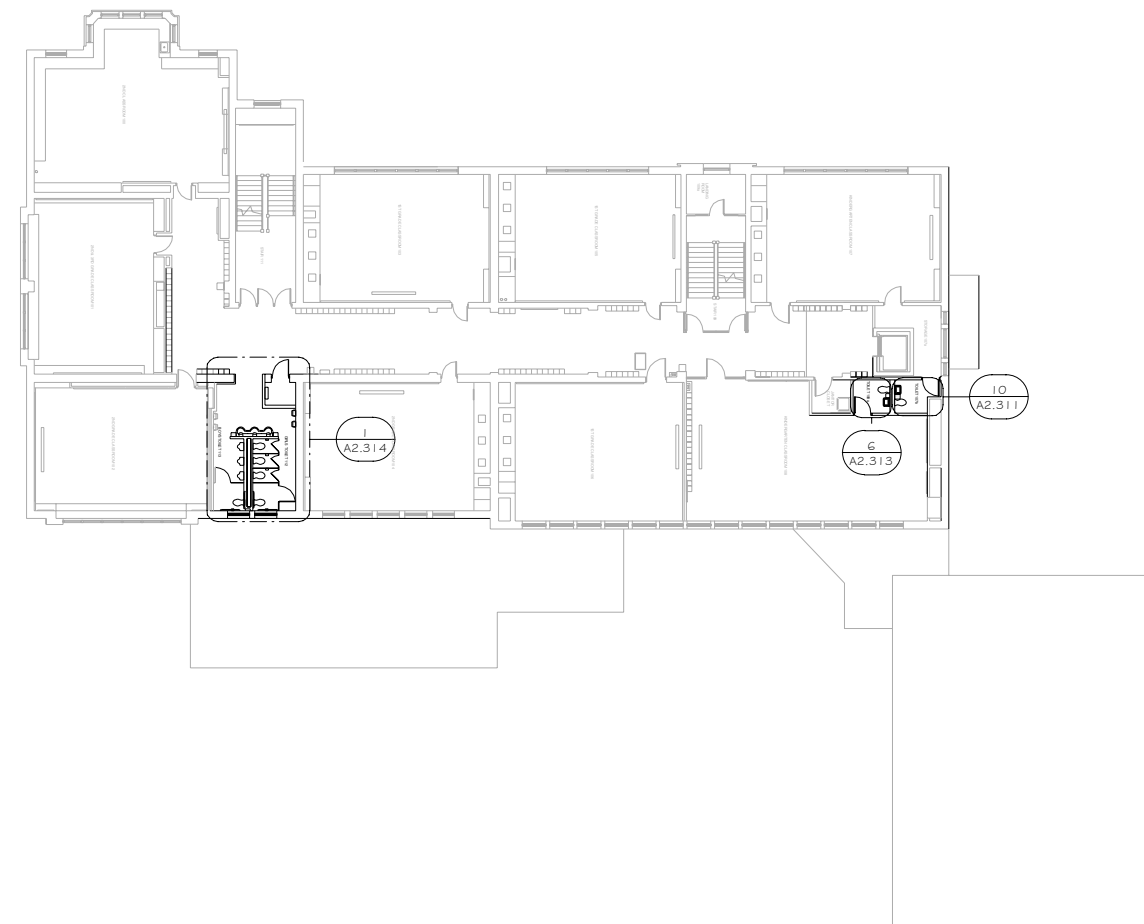
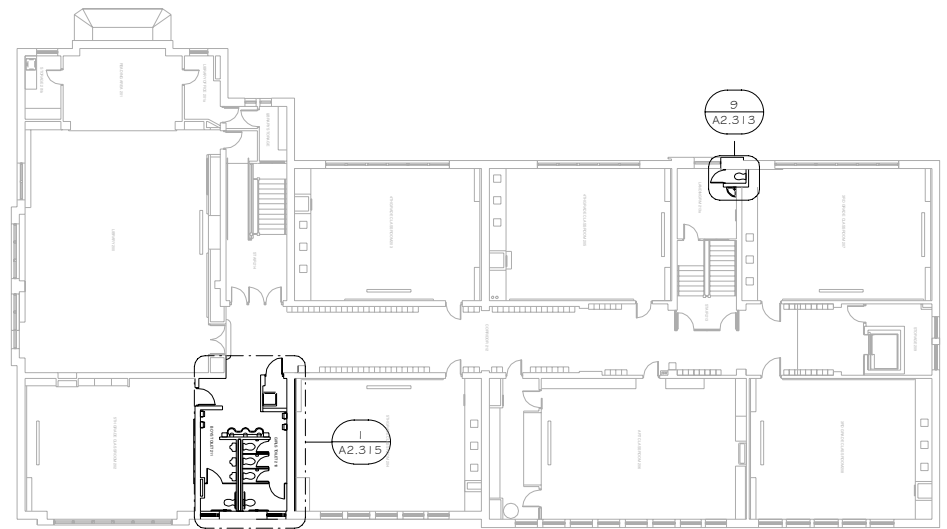


1 PHILLIPS FIRST FLOOR
1/16" = 1'-0" N →

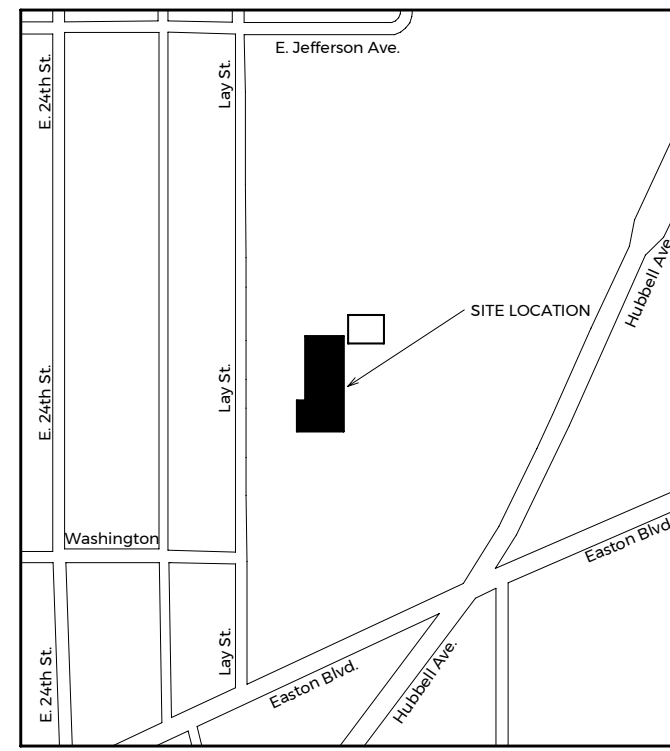


2 PHILLIPS SECOND FLOOR
1/16" = 1'-0" N →

Index to Drawings	
ARCHITECTURAL	
A0.0	TITLE SHEET
A2.310	PHILLIPS LOCATION PLANS
A2.311	BATHROOM PLANS/ELEVATIONS
A2.312	BATHROOM PLANS/ELEVATIONS
A2.313	BATHROOM PLANS/ELEVATIONS
A2.314	BATHROOM PLANS/ELEVATIONS
A2.315	BATHROOM PLANS/ELEVATIONS



3 PHILLIPS THIRD FLOOR
1/16" = 1'-0" N →



4 PHILLIPS VICINITY PLAN
1/2" = 1'-0" N ↑



1615 Golden Aspen Drive
Suite 110
Ames, Iowa 50010

515 292 6075 Phone
515 292 6370 Fax

mail@rmharchitects.com

Project Number
20010

Print Record
Project Status 10/7/20

Revision Record

Consultant



PRELIMINARY ONLY
NOT FOR CONSTRUCTION

DMPS RESTROOM REMODEL
PHILLIPS TRADITIONAL SCHOOL
1701 LAY ST., DES MOINES, IA 50317

PHILLIPS LOCATION PLANS