

Madison Elementary School

Office/entry renovation

Final Plans

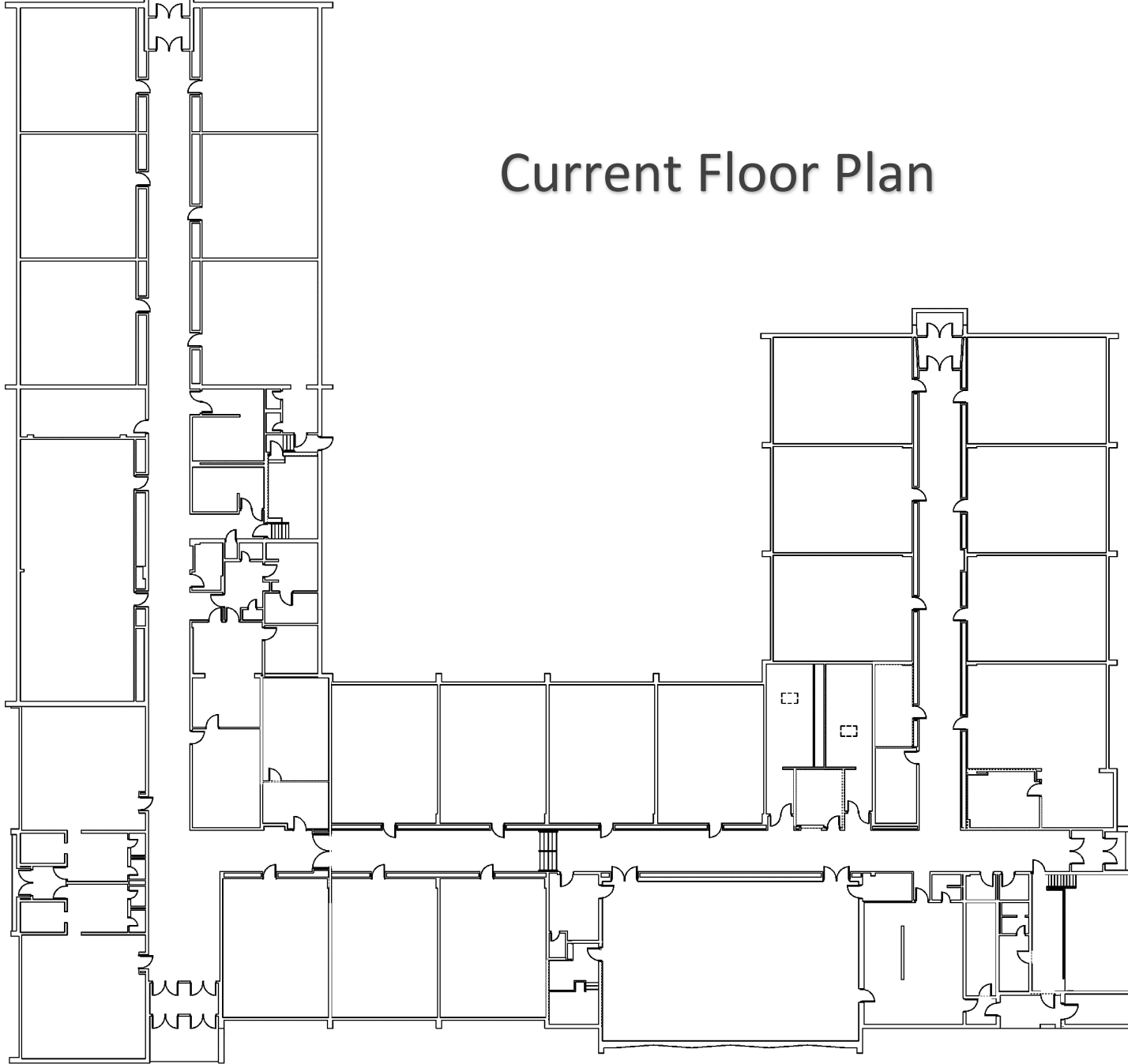
November 3, 2015

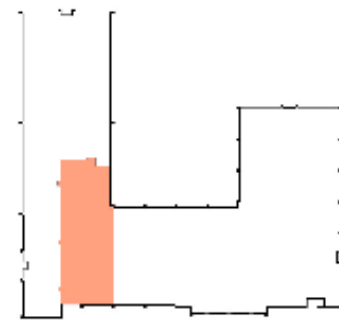
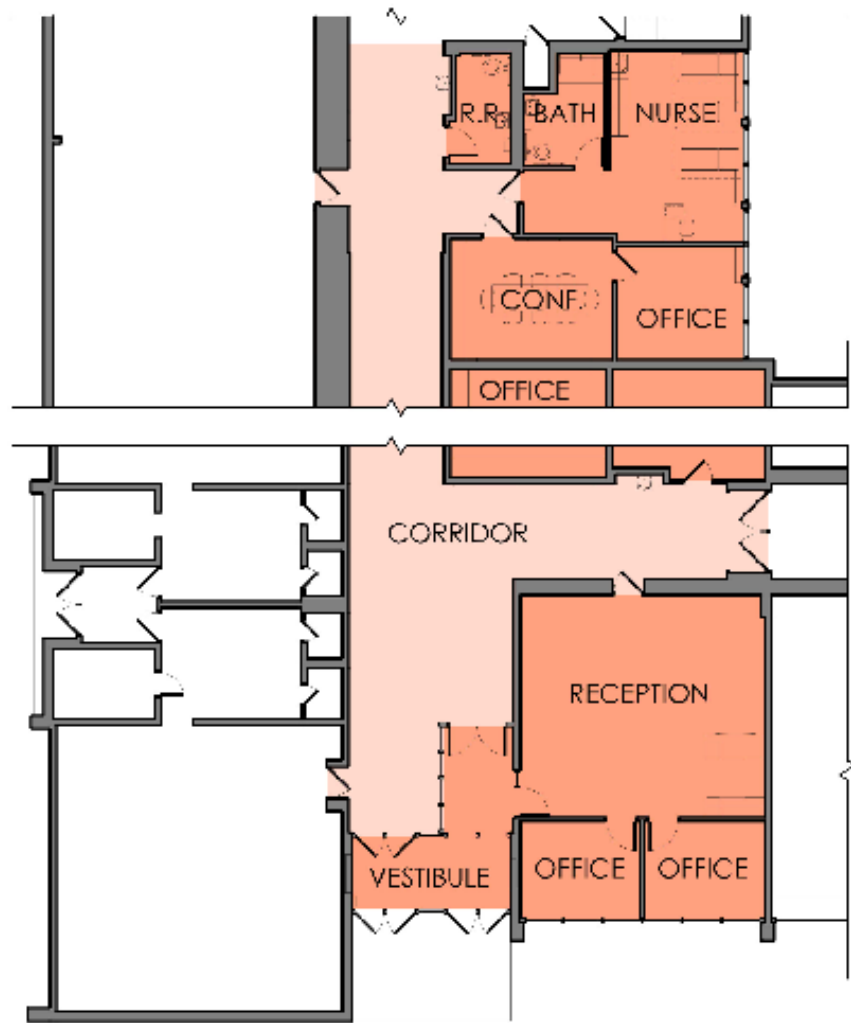


Think. Learn. **Grow.**

www.dmschools.org

Current Floor Plan





KEY PLAN



MADISON ELEMENTARY SCHOOL

SCALE: 1/16" = 1'-0"



COPYRIGHT 2015 STUDIO MELEE

Timeline and Budget

- November 3, 2015 – Board review and approval of final plans
- June 2016 – Construction start
- August 2016 – Completion

Project budget - \$300,000

Funding – Year I of SWP

QUESTIONS AND COMMENTS

Link to this presentation

<http://www.dmschools.org/departments/operations/construction/students-first/renovation-construction-plans/>



Think. Learn. **Grow.**

www.dmschools.org