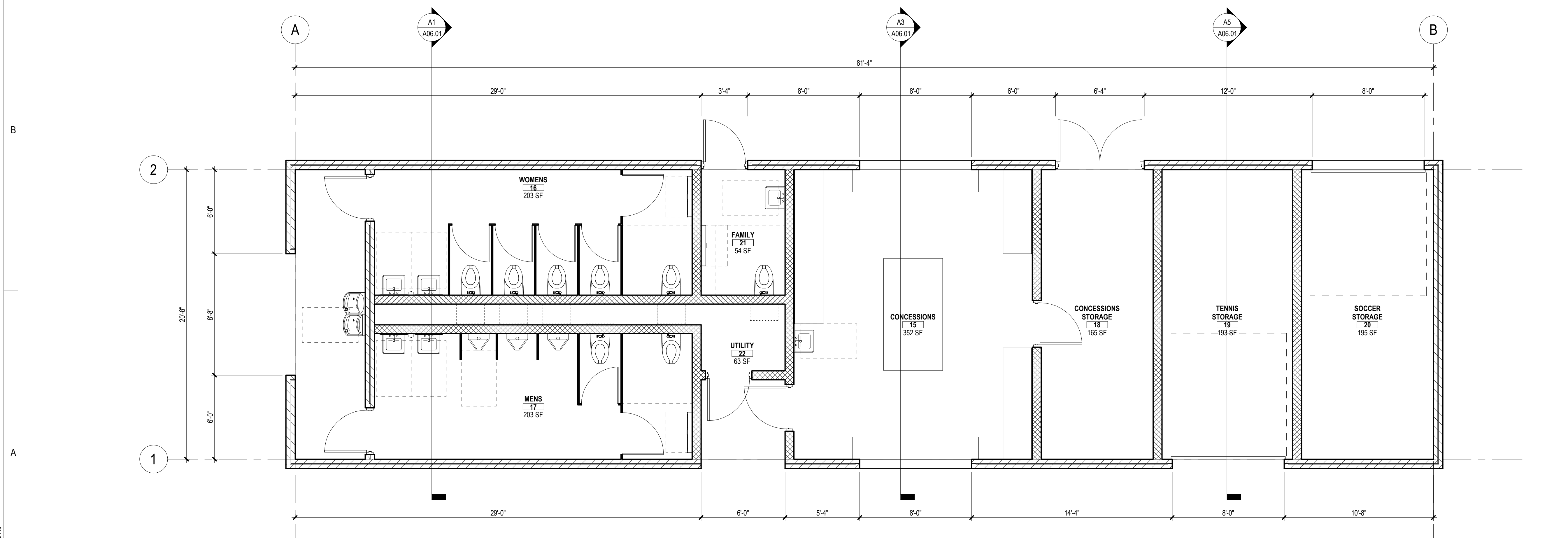


C1 REFLECTED CEILING PLAN LEVEL 1
1/4" = 1'-0"

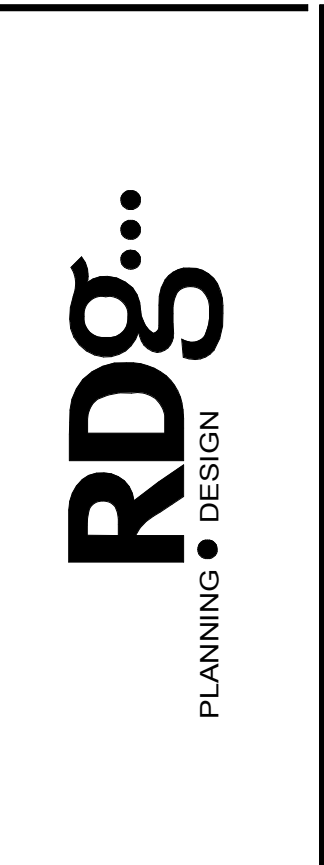


A1 FLOOR PLAN LEVEL 1
1/4" = 1'-0"

- ARCHITECTURAL GENERAL NOTES**
1. GENERAL
 - 1.1 CONTRACTOR SHALL VERIFY CONDITIONS AND DIMENSIONS PRIOR TO MATERIAL FABRICATION AND CONSTRUCTION.
 - 1.2 WHEN DRAWINGS AND SPECIFICATIONS ARE NOT IN AGREEMENT, THE BIDDER SHALL REQUEST WRITTEN CLARIFICATION PRIOR TO BIDDING AND CONSTRUCTION. IF NOT CLARIFIED PRIOR TO BIDDING, THE FOLLOWING PRECEDENCE SHALL BE USED TO DETERMINE SCOPE OF THE BID: SIZE/QUANTITY CONTROLLED BY DRAWINGS, MATERIAL QUALITY CONTROLLED BY SPECIFICATION. FINAL INTERPRETATION MUST BE ISSUED BY THE ARCHITECT/ENGINEER PRIOR TO MATERIAL FABRICATION OR CONSTRUCTION.
 2. FLOORS
 - 2.1 PLACE VAPOR RETARDERS DIRECTLY BELOW ALL CONCRETE INTERIOR SLABS ON-GRADE UNLESS A WATERPROOFING MEMBRANE IS INDICATED.
 - 2.2 SEE DRAWING A11.01 FOR TYPICAL FLOOR TRANSITION CONDITIONS.
 - 2.3 ALL SIDEWALKS AND STOOPS SHALL SLOPE 1/2" PER FOOT MINIMUM AWAY FROM BUILDING.
 - 2.4 PROVIDE RAISED CONCRETE EQUIPMENT PADS FOR MECHANICAL AND ELECTRICAL EQUIPMENT. COORDINATE EXACT PAD SIZE AND LOCATION BASED ON EQUIPMENT PROVIDED. PADS SHALL EXTEND 4" MINIMUM BEYOND EACH SIDE OF THE EQUIPMENT BASE OR AS OTHERWISE INDICATED. SEE A2 DRAWINGS FOR EQUIPMENT PADS REQUIRED FOR THE POOL AND SPA.
 - 2.5 SLOPE CONCRETE FLOOR SLABS TO DRAINS. DRAINS SHALL BE SET 1/2" BELOW TYPICAL ROOM FLOOR FINISH ELEVATION WITH FLOORS UNIFORMLY SLOPING TO DRAIN UNLESS NOTED OTHERWISE. SET DRAINS FLUSH WITH FLOOR FINISH.
 3. WALLS/PARTITIONS
 - 3.1 WALL TYPES ARE SHOWN ON SHEET A01.00. SEE SHEET FOR ADDITIONAL WALL GENERAL NOTES.
 - 3.2 WATERPROOFING SHALL BE PLACED AT ALL WALLS WITH GRADE ELEVATION CHANGES ON OPPOSITE SIDES INCLUDING BASEMENTS, TUNNELS, ELEVATOR SHAFTS AND SIMILAR PITS.
 4. DETAILS
 - 4.1 ALL VISUAL DISPLAY BOARDS (CHBD, MKRB, TKBD) ARE 4" HIGH WITH TOP AT +7'-0" AFF UNLESS NOTED OTHERWISE. CONFIRM VIA SHOP DRAWINGS.
 - 4.2 EXTERIOR LOUVERS ARE BY THE GC. SIZES IF NOT SHOWN ON ARCHITECTURAL SHALL BE SHOWN ON THE MECHANICAL DRAWINGS.
- KEYED FLOOR PLAN NOTES**

DM SCHOOLS - EAST HIGH SCHOOL CORREMINARY - NOT FOR CONSTRUCTION

SCHEMATIC DESIGN



MECH/ELEC/PLUMB

STRUCTURAL

1591 E University Ave
Des Moines, IA 50316

DES MOINES PUBLIC SCHOOLS

KEY PLAN

ISSUANCE	DATE
ISSUED	12/04/18
PROJECT NO.	R2003.435.01

RDG Planning & Design
THESE DOCUMENTS HAVE BEEN PREPARED BY RDG INC. SPECIFICALLY FOR THE DM SCHOOLS - EAST HIGH SCHOOL CONC. BLDG.
PROJECT. THEY ARE NOT SUITABLE FOR USE ON OTHER PROJECTS OR IN OTHER LOCATIONS WITHOUT THE EXPRESS WRITTEN APPROVAL AND PARTICIPATION OF RDG PLANNING & DESIGN. REPRODUCTION IS PROHIBITED.
THIS DRAWING MAY NOT REPRESENT ALL CHANGES THAT HAVE OCCURRED DURING THE CONSTRUCTION PROCESS. CONSTRUCTION DOCUMENTS, ADDENDAS AND CHANGE DOCUMENTS REMAIN THE OFFICIAL CONSTRUCTION DOCUMENTS.

FLOOR PLAN & REFLECTED CEILING PLAN LEVEL 1

A01.01

SHEET DATE: 01/11/19
PAGES MADE: 10/12/2019 2:48:03 PM