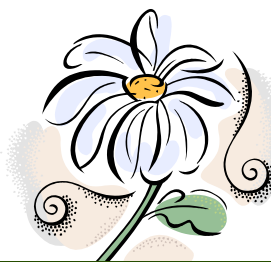


WATTS UP

ANSWERS TO YOUR SMALL APPLIANCE QUESTIONS



Q.	What is the district's policy on small appliances?
A.	DMPS is working hard to make sure energy conservation and efficiency is a priority in our schools . Part of the district's mission is to decrease our overall energy consumption through responsible energy use. Each school was allowed to develop their own Energy Plan regarding the use of small convenience appliances.
Q.	What is an Energy Plan and does my building have one?
A.	Each school was charged with developing an individualized energy plan. The plan may include a centralized area to be shared by all staff. Those staff members who wish to have small appliances in their classrooms can pay a fee.
Q.	Am I allowed to have small appliances in my classroom?
A.	Please check with your building principal regarding your building's Energy Plan.
Q.	How much does my small appliance really cost the district?
A.	See the chart below.
Q.	Have you ever considered a charge for students who recharge their phones throughout the day?
A.	No. See chart below.

Coffee pot calculation example:

$$900W/1000 = 0.90 \text{ kW}$$

$$0.90 \text{ kW} * 6 \text{ hrs/day} * 31 \text{ days} * 10.5 \text{ months} = 1758 \text{ kWh (annual)}$$

$$1758 \text{ kWh} * \$0.07 = \$123.04$$

$$\text{Coffee Pot/Keurig: } 6 \text{ hrs/day} * 31 \text{ days} * 10.5 \text{ months}$$

$$\text{Microwaves: } 1 \text{ hr/day} * 31 \text{ days} * 10.5 \text{ months}$$

$$\text{Mini-fridge: } 24 \text{ hrs/day} * 365 \text{ days}$$

Appliance	Average Power (Watts)	Annual Operating Hours	Annual Energy (kWh)	Annual Energy Cost (\$0.07/kWh)
Space Heater	1,500	500	750	\$ 52.50
Mini-Fridge, 3 cu ft	250	8760	2190	\$153.30
Microwave	1440	326	469	\$ 32.86
Portable Fan	180	665	274	\$ 19.18
Coffee Pot (drip)	900	1953	1758	\$123.04
Keurig (single cup)	1290	1953	2519	\$176.36
iPhone 5 *	5	140	1.40	\$ 0.10
Samsung Galaxy S III *	5	140	1.40	\$ 0.10



*Cost to charge iPhone 5 and Samsung Galaxy S III **Cost to power small appliances

SITE ENERGY USAGE
JULY 2012 – DECEMBER 2012
 Percentage of change as compared to same time period from previous year

SCORECARD

TOUCHDOWN		1ST AND GOAL		OFFSIDE	
Site	% Chg	Site	% Chg	Site	% Chg
Studebaker	-70.40%	Casady	-9.30%	Findley	28.00%
Lovejoy	-35.30%	Cowles	-8.70%	Pleasant Hill	19.80%
Jefferson	-24.00%	McKinley	-8.30%	River Woods	16.60%
Howe	-21.90%	Mitchell	-7.40%	Brubaker	13.90%
Moulton	-19.40%	Oak Park	-7.00%	Samuelson	13.90%
Edmunds	-16.00%	Monroe	-6.80%	Woodlawn	9.60%
Morris	-15.10%	Carver	-6.70%	Cattell	9.40%
		King	-5.10%	Hanawalt	6.80%
Hiatt	-53.20%	Capitol View	-4.60%	Wright	6.60%
McCombs	-44.00%	Jackson	-4.60%	Perkins	6.00%
Goodrell	-11.60%	Windsor	-3.80%	Madison	5.20%
		McKee	-0.90%	Park Avenue	4.90%
Hoover/ Meredith	-28.60%	Willard	-0.50%	Garton	4.40%
Moore (Scavo)	-16.30%	Hubbell	-0.20%	Phillips	3.80%
North	-11.80%			Stowe	3.80%
		Central Academy	-6.00%	Hillis	2.30%
CNC	-12.50%	Walker Street	-4.50%	South Union	1.70%
		Central Campus	-4.30%	Smouse	1.30%
		Roosevelt	-2.10%	Greenwood	0.90%
		Lincoln	-0.60%		
				Merrill	20.30%
				Brody	13.50%
				Hoyt	13.50%
				Callanan	10.70%
				Weeks	9.40%
				Harding	8.80%
				McCombs GH	0.40%
				Aviation Lab	9.40%
				Kurtz	9.00%
				Van Meter	2.20%
				East	0.60%
				Walnut Street	19.70%
				Dean Avenue	12.40%
				Welcome Center	6.70%
				Prospect	1.10%

Blue indicates ENERGY STAR® labeled buildings
 * Buildings under construction during same time period last year

Visit www.dmschools.org for more details of the district's energy mission and building performance. **Tell us about it!** Do you want to share your ideas for saving energy or helping our environment, or want to let us know about your projects?
 E-mail: brenda.walker01@dmschools.org